



June 9, 2017

Office of Hopkins County Judge
The Honorable Robert Newsom
Post Office Box 288
Sulphur Springs, Texas 75483

Farmers Electric Cooperative Member: Ken Ord
Service Order Number: 1704002719

Dear Judge Newsom,

Farmers Electric Cooperative, Inc. is requesting permission to re-route existing electrical power distribution facilities along CR 1143, which is located approximately 0.50 mile west of FM 275, in Hopkins County, Texas.

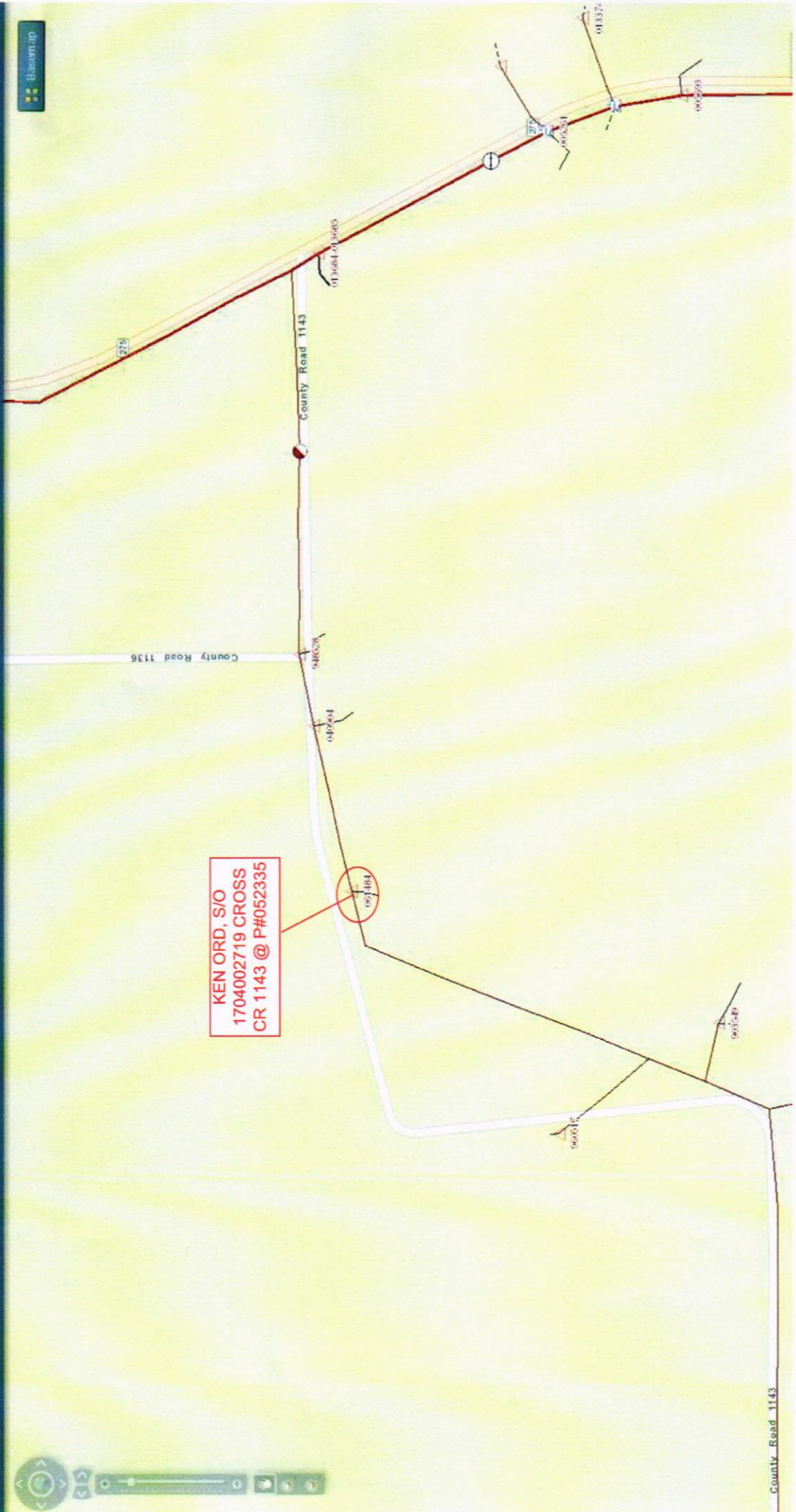
Site location map and construction sketches are enclosed. The construction sketch details the proposed work. All road crossing will have a minimum vertical clearance of 22 feet.

If you have any questions, please contact field engineering representative Cody Bland Office 903-453-0754 or mobile 903-513-5157.

Sincerely,
Cody Bland
Engineering Assistant
cbland@farmerselectric.coop

Enclosures

Submitted by:
Brandon Darrow
Field Engineering Coordinator
Office 903-453-0740 Fax 903-453-0663
bdarrow@farmerselectric.coop



KEN ORD, S/O
1704002719 CROSS
CR 1143 @ P#052335

County Road 1143

14.4KV



P1= .5 MILE
FROM FM 275



RECEIVED EASEMENT

26 DEGREE
TURN

30' GL

2

4 ACSR

P#052335

NEW LINE IS
BISECTING ANGLE

NEW GUY WIRE ON P1
PER RL. BACK UP NEW SPAN

RECEIVED EASEMENT

CR 1143

250

RECEIVED EASEMENT

30' GL

3

4

